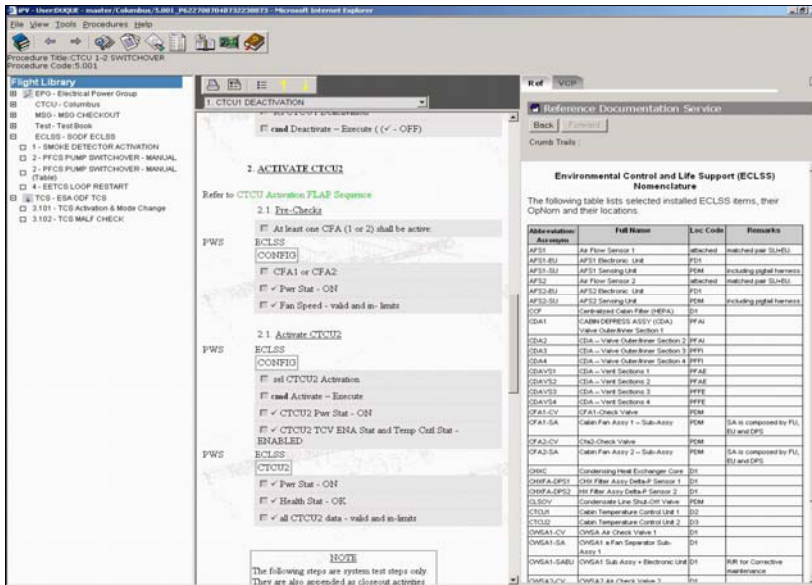


# International Procedure Viewer



The **iPV** is developed by Skytek and EADS ST to provide a system for the viewing, consultation and execution of ODF (Operations Data File) procedures onboard the International Space Station. The system provides several support services to assist in the execution of these procedures. **iPV** is a web based client server application whose user interface is displayed within an Internet Explorer browser.

The ODF procedures are generated by using the ODF PAT (Procedure Authoring Tool) and stored as XML files for access and execution by the **iPV**.

The **iPV** system provides the following services:

**Login:** this allows the user to access the **iPV** system through a username and a password. When the user logs into the **iPV** system, his preferred workspace is presented to him.

**Procedure execution:** this allows the user execute the steps of a given procedure. Two types of procedures are supported, Checklist and Logic.

**Flow Procedures:** Checklists are used mostly for procedures that can be organised in a sequence of operational steps; Logic Flow Procedures are used to represent complex operations, where many decisions have to be made.

**Virtual Control Panel:** this enables the **iPV** viewer to embed control panels in its framework. These control panels can send and receive actual telemetry data and telecommands. This service allows the user to access at the same time both the control panel, that is the application to be controlled, and its related documentation.

**Annotation:** this lets the user add annotations to any service of the system, for example a comment to a procedure step or a comment to a control panel.

**Help:** this provides the user with information on how to operate the **iPV** itself.

**Reference Documentation:** this lets the user access and consult, all the reference documentation associated to the flight procedures.

# iPV

---

**Search:** this allows the users to search all contents inside the **iPV** system for occurrences of a specific text.

**Logging:** this keeps track of all user interaction with the system.

**Navigator:** this provides the user with a toolbar and menu bar with which to access the features provided by **iPV**.

**TOC:** the Table of Contents provides a tree view style listing of all ODF procedures that are accessible within the **iPV** system. The user can view and execute a procedure by selecting it from within the TOC.

**iPV** is developed by Skytek and EADS under ESA contract 14464/00/NL/FG in a joint development effort with NASA.

---

#### Server OS Supported:

- Linux (Redhat 6.0 or higher),
- Windows NT/2000/XP, Sun Solaris
- Client OS Supported:
- Windows NT/2000/XP

#### System Requirements:

- Internet Explorer 5.5 or higher.